

# Digital Visual Acuity Chart System

## VLC - 1900 / VLC - 2400 (P) (New System)

World  
Market Share  
No. 1



- New Standard of Visual Acuity Test
- Space-free Chart System
- No more Consumables needed
- Various Charts Support
- Image Slide-Show Customizable
- Stabilized All-in-One System Integration Technology
- User Friendly Function Design

# Digital Visual Acuity Chart System VLC-1900 / VLC-2400(P) (New System)

## » DISTINGUISHED FEATURES

### Window CE Embedded Type Visual Acuity System

Window CE Embedded type of VLC chart system is more stable than computer based system and needs not additional accessories

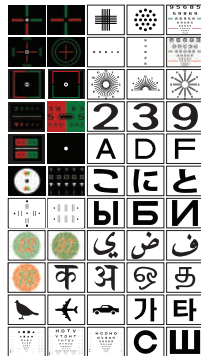


VLC chart system needs not cooling fan as it generates less heat while in operation

Booting Time: Less than 25 seconds

### Special Charts & Various Precise Examination

VLC chart system helps various and precise exam including Binocular Balance, Aniseikonia, Streopsis, Binocular Fusion, Suppression, Strabismus, Phoria, Color Blindness and Amsler Grid Test with more than 100 charts



### Wide Viewing Angle & Clear Chart

VLC chart system adopts high resolution 19-inch (1280 x 1024) & 24-inch (1920 x 1080) reliable industrial LCD panel with wide viewing angle which provides clear chart and removes the image distortion as well

### User friendly function for test distance adjustment

Viewing distance can be adjusted in accordance to the space of test room



Viewing Distance is selectable by 0,25M step within 1,5M (Min) ~ 6,0M (Max)

### Networking Function

VLC chart system communicates with compatible automatic phoropters

### Wired / Wireless Remote Control with LCD Window

VLC chart system supports both wired / wireless remote control



High brightness of LCD panel enhances user convenience at dark eye exam circumstances



Remote control needs not replacement of Battery according to the adoption of rechargeable Lithium-Ion Polymer internal battery

## SPECIFICATIONS

Model	VLC - 1900	VLC - 2400/(P)
LCD Type	19 inch (SXGA) TFT LCD	24 inch WUXGA TFT LCD
Resolution	1208 X 1024 pixels	1920 X 1080 pixels
Chart window size	(H) 300 X (W) 375mm	(H) 298.89 X (W) 531.36 mm
Brightness	80 ~ 320cd/M (5 - Level variable)	Max 250 cd/m <sup>2</sup>
Chart Available	"Landolt, Snellen, English, Arabic, Numeral, Color Blindness, Special Charts, Image and etc."	
Selectable Distance	1.5 ~ 6M (0.25M step)	
Memory Type	SD Card	IDE type Flash Disk Module 4G
Power Supply	DC 12V / 5A	DC 12V / 5A
Power Consumption	40W	Less than 60W
Comctn	Wireless	IRDA Communication
	Wired	RS232 Communication
Dimension / Weight	(W) 436 X (H) 362 X (D) 59.55mm / 5.5Kg	(W) 624 X (H) 431 X (D) 79mm / 9Kg
Remote Control	(W) 69.5 X (H) 235.5 X (D) 26mm / 200g / Rechargeable Battery	
Data Interface	serial (RS-232)	
Standard Accessory	Wall Mount Bracket,	Wall Mount Bracket
Optional Accessory	Poll type Floor Stand, Red/Green Glasses, Pola Glasses	

### User friendly Function

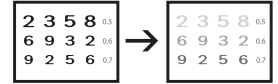
#### Black / White Reverse

Black / White reverse function helps Cataract and Lasik patients recognize charts easily



#### Contrast Sensitivity Adjustment

VLC chart system helps examiner test with Cataract patients using contrast sensitivity adjustment



They enable the examiner adjust to 10 steps,

#### R / G Filter Adjustment Function

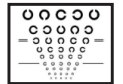
VLC chart system provides 32steps of R / G filter density that can be used in accordance with test circumstances



All of Red/Green color charts can be reversed

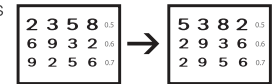
#### ETDRS Adjustment Function

Position of opto-types of ETDRS-1 and ETDRS-2 can be changed by pushing a botton on remote control



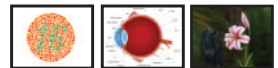
#### Random Function

VLC chart system provides various charts with differently order opto-types with Number, Alphabetic letters, Landolt, Snellen opto-types in order to protect the memorizing the order of opto-types by patients



#### SLIDE SHOW Function

VLC chart system can store 18 custom images in SD card and displays the images while the system is in power saving mode. And the images change in 5,10 or 15 seconds



6 kinds of eye movement test charts during Slide mode.

4 kinds of Amsler Grid for Macular Degeneration,

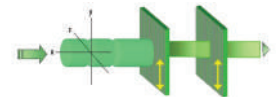
Animation for making a child concentrated during test.

#### Chart Selection Function

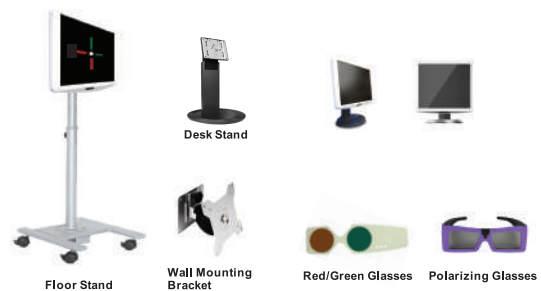
An examiner can select one of both Non-pola and Pola chart,

#### Best Polarization Performance

VLC-2400 / P  
Polarization of 24-inch full screen  
Optical polarization glass panel  
Precise eye exam available using special charts



### Various System Placements and Accessory selectable



#### View-M Technology Co., Ltd.

3/4F, 150, Beotkkot-ro, Geumcheon-Gu, Seoul, South Korea, 153-828

Tel : +82 2 866 2332 Fax: +82 2 866 2399

E-mail: sell@viewmtechnology.com

Web-page: www.viewmtechnology.com